

Illustration - Type - E

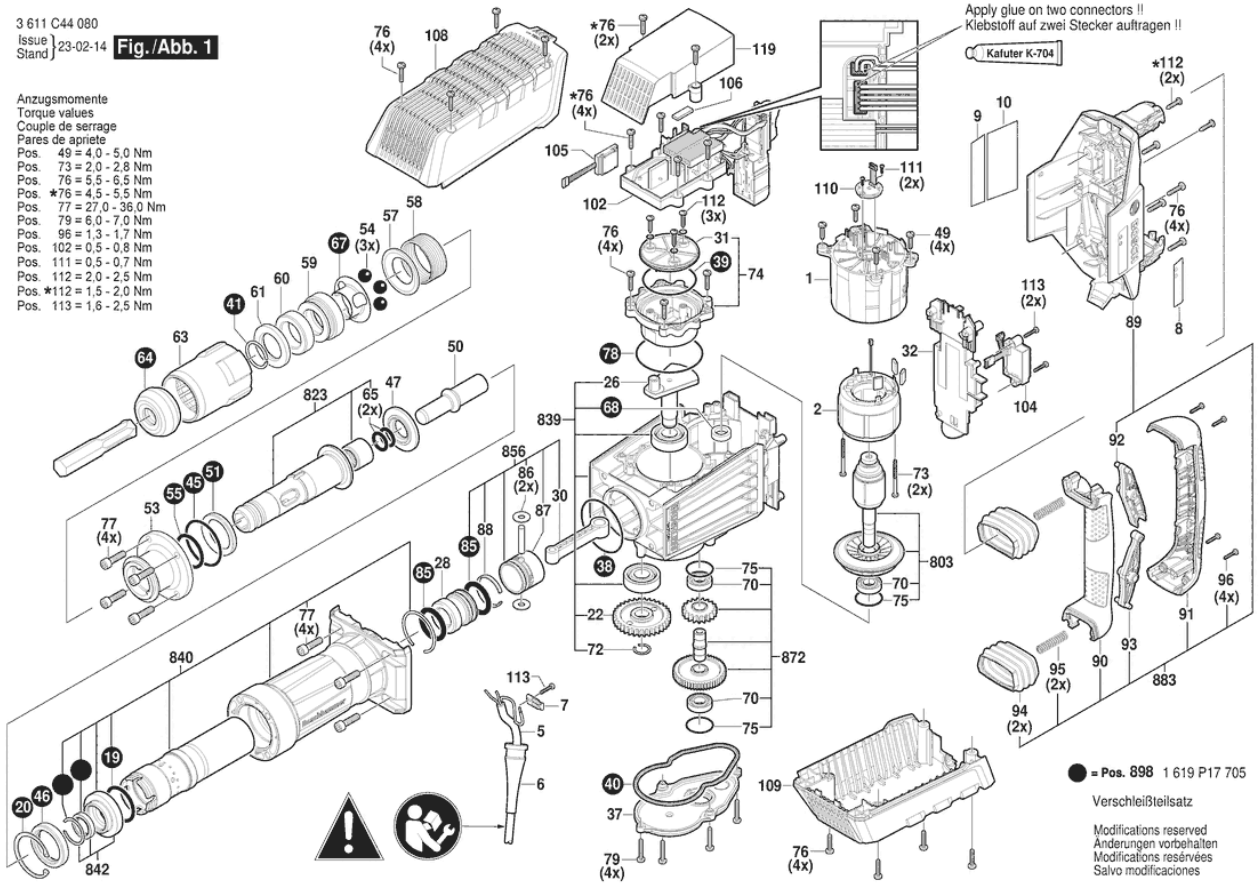


Illustration - Type - E

3 611 C44 080  
Issue | 24-07-29  
Stand } **Fig./Abb. 2**

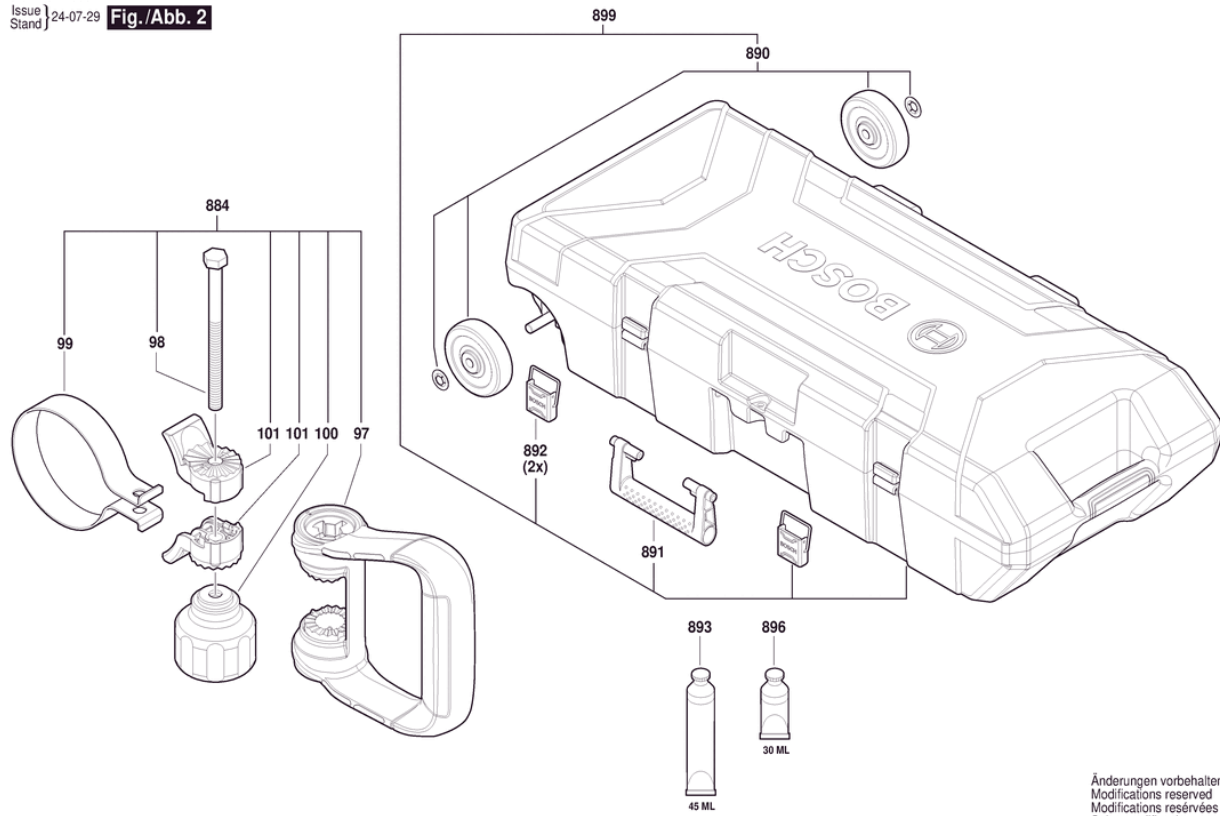
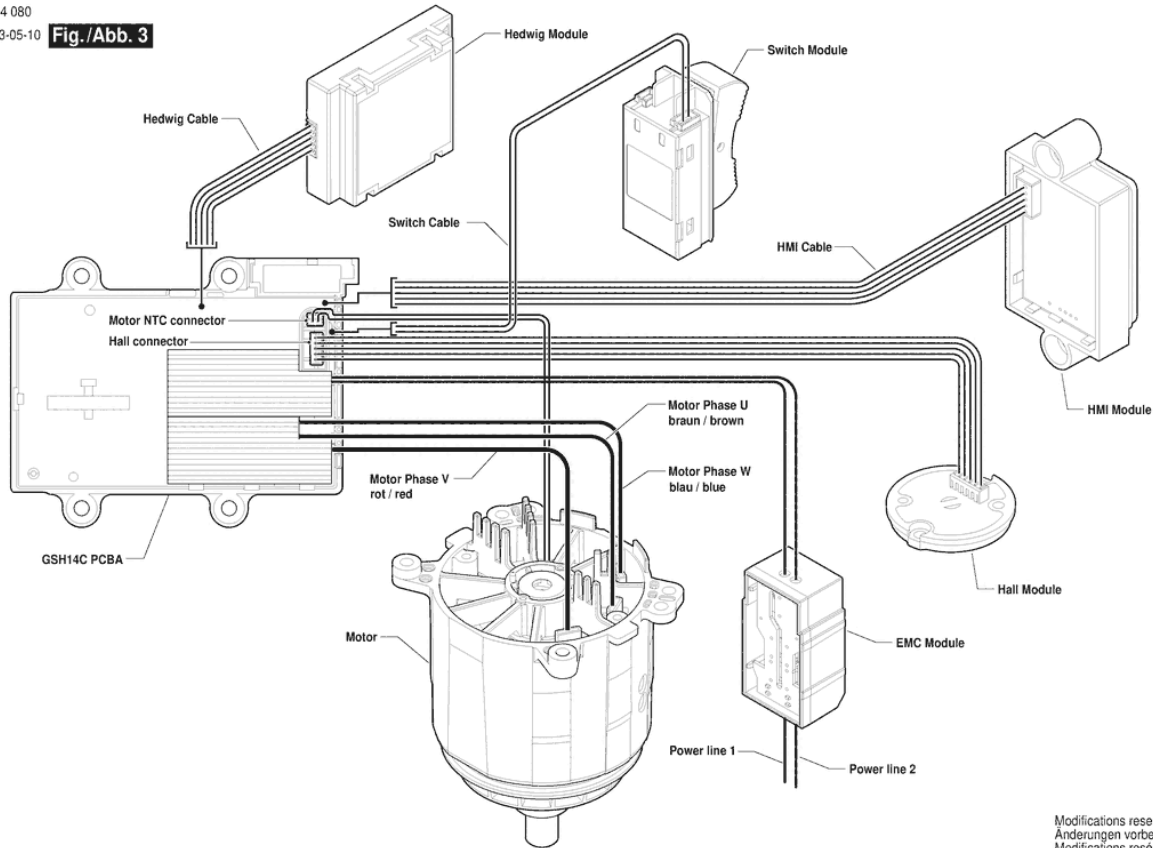


Illustration - Type - E

3 611 C44 080  
Issue |  
Stand | 23-05-10

Fig./Abb. 3



Modifications reserved  
Änderungen vorbehalten  
Modifications réservées  
Salvo modificaciones

## Spare parts list

Item	Part Number	Description	Illustration
1	1 619 P16 776	Motor Housing	1
2	1 600 A02 1VS	Stator 220-240V	1
5	1 614 460 098	Power supply cord	1
6	1 610 703 053	Grommet Ø9,7-Ø12X89 MM	1
7	1 601 302 018	Fastening Clamp	1
9	1 619 P16 778	Manufacturer's nameplate	1
10	1 619 P17 563	Sticker	1
19	1 619 P16 779	O-Ring	1
20	1 619 P17 054	Retaining ring	1
22	1 619 P16 781	Cylindrical Gear	1
26	1 619 P16 785	Eccentric Shaft	1
28	1 619 P16 786	Striker	1
30	1 619 P16 788	Connecting Rod	1
31	1 619 P16 789	Housing Cover	1
32	1 619 P16 790	Switch Set	1
37	1 619 P16 793	Bearing cover	1
38	1 619 P16 794	O-Ring	1
39	1 619 P16 795	O-Ring	1
40	1 619 P16 796	Sealing Frame	1
41	1 619 P17 056	Retaining ring	1
45	1 619 P16 799	O-Ring	1
46	1 619 P17 426	Damping Ring	1
47	1 619 P16 801	Disc	1
49	1 613 435 016	Torx Oval-Head Screw M5X20-TORX,T25 SILVER	1
50	1 619 P16 802	Striker Pin	1
51	1 619 P16 803	Damping Ring	1
53	1 619 P16 804	Flange	1
54	1 619 P16 805	Ball	1
55	1 619 P16 806	O-Ring	1
57	1 619 P16 807	Holding Plate	1
58	1 614 621 002	Compression Spring	1
59	1 619 P16 808	Stop Sleeve	1
60	1 619 P16 809	Damping Ring	1
61	1 619 P16 810	Supporting Disc	1

## Spare parts list

Item	Part Number	Description	Illustration
63	1 619 P16 812	Protection Sleeve	1
64	1 619 P16 813	Protective Cap	1
65	1 619 P16 814	O-Ring	1
67	1 619 P16 815	Indexing Disk	1
68	1 610 290 119	Shaft Seal	1
70	1 619 P10 533	groove ball bearing	1
72	3 600 224 001	Retaining ring	1
73	1 613 435 009	Tapping Screw ST-4,8X57,5-TORX,T20	1
74	1 619 P16 816	Grease Cartridge	1
75	1 610 210 130	O-Ring 32,0X2,5 MM	1
76	1 619 P07 816	Torx Oval-Head Screw M5X16-TORX, T25 SILVER	1
77	2 910 151 246	Hex Socket Head Cap Screw DIN 912-M8X30-10.9	1
78	1 619 P16 817	O-Ring	1
79	3 603 435 003	Thread-forming tap. Screw	1
85	1 610 210 217	O-Ring	1
86	1 610 100 021	Disc	1
87	1 613 101 014	Straight Pin	1
88	1 610 500 024	Retaining snap ring	1
89	1 619 P16 818	Rear Housing Section	1
90	1 615 132 133	Handle Cover	1
91	1 615 132 134	Handle Cover	1
92	1 612 026 159	Reverse-Transfer Lever	1
93	1 612 026 160	Reverse-Transfer Lever	1
94	1 619 P17 119	Bellows	1
95	1 619 P17 120	Compression Spring	1
96	1 619 P00 105	Torx Oval-Head Screw 4X20	1
102	1 619 PS0 902	Electronic Module	1
104	1 619 P16 865	Electronic Module	1
106	1 619 P17 108	Damper	1
108	1 619 P16 826	Cover	1
109	1 619 P16 827	Cover	1
110	1 619 P16 864	Electronic Module	1
111	1 619 P00 220	Torx Oval-Head Screw 3X10	1

## Spare parts list

Item	Part Number	Description	Illustration
112	1 613 435 012	Torx Oval-Head Screw SILVER M4,8X25-TORX,T25	1
113	2 603 490 023	Torx Oval-Head Screw 4X20	1
119	1 619 P16 829	Cover	1
803	1 619 P17 697	Rotor	1
823	1 619 P17 701	Toolholder	1
839	1 619 P17 700	Gear Housing	1
840	1 619 P17 699	Impact Mechanism Housing	1
842	1 619 P17 797	Disc	1
856	1 619 P17 702	Hammer Piston	1
872	1 619 P17 698	Cylindrical Gear	1
883	1 619 P17 703	Handle	1
898	1 619 P17 705	Wear and Tear Part Set	1
97	1 602 025 08D	Auxiliary Handle	2
98	2 911 021 267	Hex Screw	2
99	1 611 316 028	Clamping Band	2
100	1 619 P16 922	Star Knob	2
101	1 600 A00 8BL	Clamping Piece	2
884	1 619 P17 704	Auxiliary Handle	2
890	1 619 P17 891	Wheel Set	2
891	1 619 P17 892	Handle	2
892	1 619 P17 893	Lock	2
893	1 615 430 014	Grease Tube 45 ML	2
896	1 615 430 010	Grease Tube 30 ML	2